



McAlester Center – Cuddles

Background

McAlester Regional Health Center (MRHC) is located in McAlester, Oklahoma. MRHC has been serving its community since 1978. The Labor and Delivery team has delivered approximately 15,000 babies with 4 generations of families being born in Southeast Oklahoma. The center is equipped with 15 postpartum rooms, 13 bassinet nurseries, 4 delivery rooms and 2 observation rooms.

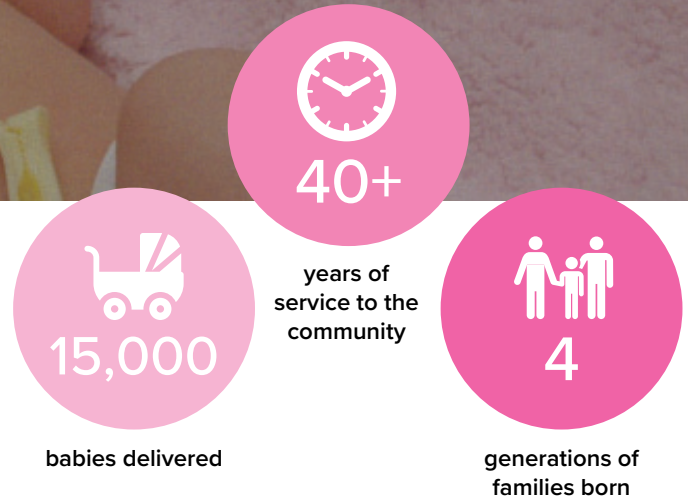
The Challenge

MRHC was in need an extensive security system in the nursery that would ensure a quick response to any threats of infant abductions. The system also needed to integrate with existing hospital security solutions. As the families in the unit are a top priority, MRHC was also looking for a solution that was easy to use, safe for the infants, and allowed the hospital to admit and discharge babies safely and more efficiently.

The Solution

MRHC extensively researched 3 different infant protection systems and toured other hospitals across the state before determining that Accutech Security's Cuddles Infant Protection System was perfect for their needs. The system was able to integrate with their existing wired and wireless nurse call system, enhancing security for the entire unit.

Cuddles also met the requirements for comfort and ease of use. Cuddles uses a lightweight,



self-adjusting band with a tag that perfectly fits a babies' ankle. The ankle bracelets are made of a soft polyester blend and the tag will never contact baby's skin, so there is no discomfort. If a bracelet is cut or removed, an alarm will sound, and the entire floor is shut down.

The solution installed at MRHC has several alarms in place that are activated in various ways, including if a band loses contact with the child's skin, if an infant tag gets close to any of the department's

exits, if someone loiters too long at a door, and if a door is slightly open.

According to Bryce Segotta, MRHC security officer, "The system offers a deterrent and helps security officers quickly respond to an abduction attempt and identify any potential threats. If someone sets a door off, the alarm will light up and tell you where an attempt is happening."

Installation also included integrating the technology to shut down the entire wing in the case of an abduction attempt.

"When an alarm is activated, the entire floor of the hospital is shut down. Until we see what the problem is, and we actually shut the alarm off, you still can't get out," Monks said.

With Accutech's Cuddles, we now have a great system in place. We have no issues, no concerns about it not working correctly. We've had very positive feedback from parents."

Megan Monks
Obstetrics Nurse Manager at MRHC



Why Clinicians Love Cuddles Infant Protection System

An abductor can grab and leave with a baby in just seconds, even with the most caring and attentive staff. Installing the Cuddles Infant Protection System adds an extra layer of security—and allows your staff to spend more time caring for your smallest patients.

Cuddles provides unique benefits

- ✓ Always secure **self-adjusting soft bracelets**
- ✓ **Integrates seamlessly** with existing platforms and devices
- ✓ System that continues to **function even if your PC and network go down**
- ✓ Free and local **24/7/365 customer support**
- ✓ **Fewer false alarms** because of unique wireless frequency

Administrators and clinicians love Cuddles

“This is one of many measures we have in place to keep the babies safe. We are setting the standard for healthcare by providing the latest technology while still giving a personal touch to our patients.”

Jim Matney, President & CEO at Colquitt Regional Medical Center

“The system is user-friendly and our nurses feel the soft bands on the leg do not cut the baby (like other systems). They alarm quickly if removed and Accutech representatives assist as needed and provide additional training upon request.”

**Amy Buffamonte,
Director of Newborn
Nursery,
Women’s Hospital at
Renaissance**

“I prefer the Cuddles Infant protection system over our previous security system... Cuddles is more accurate in regard to the infant location and the problem that needs to be addressed. It alerts you to a band alarm, band removal, infant removed from the unit and low tag battery. The guessing is no longer there as to what the problem may be.”

**Melissa Carter,
Communication specialist,
Baptist Health Lexington**

“It adds another measure of comfort and confidence for parents. **Each tag is uniquely identifiable to match mom and baby.**”

**Susan Kennedy,
OB Nurse Manager at Carthage Hospital**

“I like the **Cuddles soft band/tag** being on the infant’s ankle instead of tugging on their navel cord (like other systems). Parents report issues with umbilical tags when changing the diaper and are always concerned about the device tugging on the navel. The Cuddles tag/soft band are out of site and mind. This system promptly works and has gone off every time we had an infant too close to the exits.”

**Rachael Winston, Director of Women’s Services,
BBH - Walker Baptist Medical Center**

